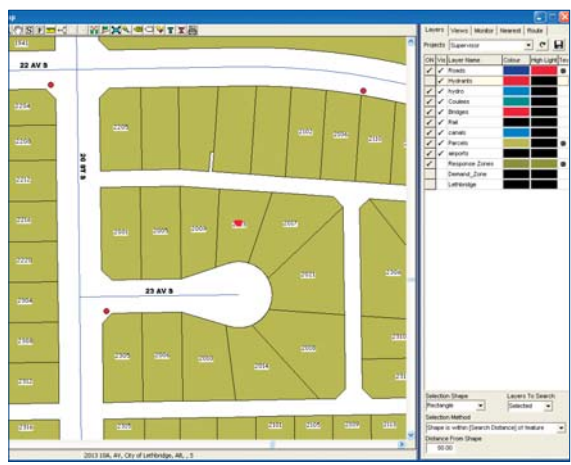




# FDMCAD

FDMCAD dispatch software provides mission-critical information that speeds response time and saves lives.

Innovative Solutions for Public Safety



Map-based CAD provides visual details.

## Instant information access

FDMCAD is a fully integrated, real-time mapping and data entry system allowing Fire and EMS agencies to quickly prioritize resource assignments during emergency responses.

Our proven system interoperability eliminates guesswork with single-click access to related records. Dispatchers access property, contact, and hazmat details from the integrated RMS database for effective pre-arrival preparation.

Built-in support for ProQA™ and FDMTriage system speeds decision-making. Custom FDM interfaces to tri-service applications, TDD/TTY, mobile data, paging and station alerting, and radio and push-to-talk provide a single point of access for reliable, up-to-the-minute information.

Dispatch from embedded map files by simply double-clicking in the appropriate location. Address validation occurs in real time against your geocoded map data or ESRI's nationwide geocoder. Potential duplicate calls are identified based on call and incident location,

response zone, and incident type. FDMCAD also automatically identifies any property cautions, hazardous materials, and zone and street segment cautions associated with the incident location.

## Optimize resource management to increase operating efficiency

The easy-to-use interface is fully configurable. Global and individual settings allow dispatchers to configure their desktop to the way they work, including user-defined field labels and color coding. Save time during high-activity dispatching and data entry with optional command line, mouse and function keys. Configurable XML-based windows conveniently recall incident details. A complete administrator toolset builds custom reports with ease.

FDMCAD can separate the role of calltaker from dispatcher so additional information is time-stamped and automatically relayed to dispatchers and responding units.

Expand your decision-making capabilities with automatic data feeds from alarm systems, ANI/ALI controllers, and AVL to determine best routing. The response logic allows your department to refine the FDMCAD algorithm, configuring response recommendations to the unique requirements of your region. Dynamic unit recommendations match the response requirement (based on incident type, response zone, and alarm level) with units currently available to respond to the call.

## FDM Mobile CAD solutions

FDM Mobile CAD ensures rapid deployment in the field with real time statusing, integrated mapping, best routing, full messaging and, in the event of communications failure, full data access.



# FDMCAD's optimized call taking and dispatch process is fully integrated for life-saving reliability.



Mobile CAD touch screen interface.

- From screen appearance to print reports, users can customize the look and feel to their individual preferences.
- Intuitive GUI navigation for optimum data flow using mouse or command line.

## Reliable

- ANI/ALI data is automatically processed—when safety and seconds matter most.
- System timestamping to monitor and record all call activity.
- Automatic address validation.
- Audible and visual system timers and alerts, and unit status activity.
- 24/7 support services—get the answers you need, when you need them.

## Flexible

- Minimal screen layering and color-coding reduces error when monitoring incident status and resources.
- Point-and-click and command line data entry.
- Dynamic unit recommendations are based on AVL and GIS road network data.
- Automatic messaging to emergency responders and integration with station alerting and other CAD systems.

## Integrated

- FDMCAD reduces implementation complexity using off-the-shelf GIS mapping and a non-proprietary database.
- Proven interoperability shares real-time information anywhere, anytime.
- FDMCAD integrates fully with FDM's RMS for fast data management and reporting.
- Seamless data transfer to other RMS systems.

## Mobile CAD

- Instant access to statusing, data and property information in the field using wireless options.
- Silent dispatch via wireless communications.
- Unit-to-unit messaging, alerts, hazards, pre-plan contact, and mapping information.
- AVL plotting and best routing.

## Customizable

- FDM's end to end dispatch, records management and mapping solutions are easily modified for your agency's operational requirements.
- Multi-agency and regional functionality provides convenient information sharing between agencies.

*Helping public safety agencies make better decisions for the safety of their communities.*

## About FDM Software

Since 1990, FDM Software Ltd. has been an innovative provider of multi-purpose software solutions for information management. Based in North Vancouver, B.C. with offices in Washington, Utah, and Ontario, FDM combines industry expertise and robust software development for full scale solutions in the public safety sector. Ask about our integrated Records Management, GIS Analyst and Mobile solutions.

