

# FDM GIS ANALYST

## Case Study

Innovative Solutions for Public Safety

## Real-time analysis when you need it

You have questions that need answers. Where should the next fire station be built? What hazards are present in a response zone? What areas will fall outside response benchmarks in the next three years?

The mission of your public safety agency is to protect life and property in an emergency. And today, fiscal challenges at all levels of government demand greater efficiency and economy. How does your agency better plan for risk management and preparedness?

FDM GIS Analyst, built on top of ESRI's ArcGIS technology, provides the answers by spatially leveraging your existing database records. You'll make better decisions when station and resource planning – or responding to an emergency in the field. And you can do it without any GIS expertise.

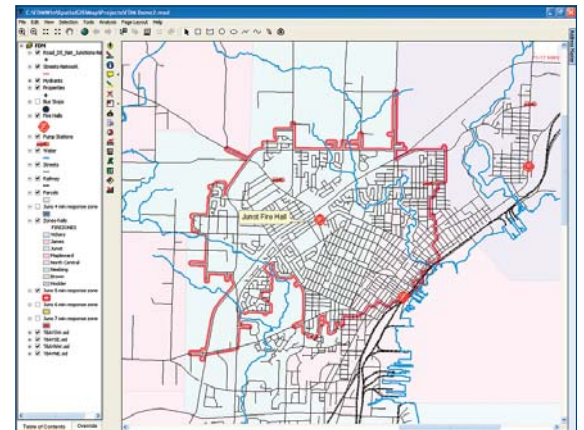
The following scenarios use GIS Analyst to improve your agency's planning capabilities and responsiveness.

## Incident Trend Analysis

### You need to know...

You've established a five-minute response area from all stations. Now you need to know if it's being met – and when it isn't, what are the contributing factors?

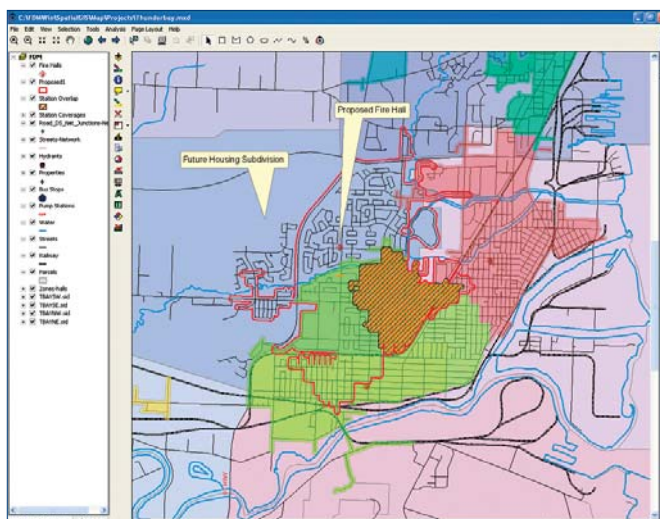
Use the custom **Response Coverage Wizard** (RCW) in the GIS Analyst to generate a **What If** scenario for a 5-minute response polygon. Next, the **Create Shapefile Wizard** extracts an image from your RMS data set for spatial analysis. The result set shows incidents that fall inside the 5-minute **What If** scenario – and those which did not meet the benchmark. You now have the information you need to adjust your response protocol.



Standards of Coverage Analysis.

# FDM GIS Analyst's easy-to-learn technology extends your analytical and planning capabilities.

## Station Relocation



Coverage Area Analysis.

### You need to know...

Your community is growing rapidly and adding new housing. What is the best location for the next fire hall?

The **Response Coverage Wizard** generates a station coverage layer for 5-minute benchmarks. From a databank of prospective properties, you also run multiple **What If** scenarios showing future 5-minute response zones. Spatial assessment shows overlapping coverage with existing stations; the community's needs are best served if the fire hall is built in the new housing development.

Your budget update to council uses this spatial information to show that the proposed fire hall meets the 5-minute response benchmark. You suggest utilizing development fees to fund a new station within a proposed subdivision.

*Helping public safety agencies make better decisions for the safety of their communities.*

### About FDM Software

Since 1990, FDM Software Ltd. has been an innovative provider of multi-purpose software solutions for information management. Based in North Vancouver, B.C. with offices in Washington, Utah, and Ontario, FDM combines industry expertise and robust software development for full scale solutions in the public safety sector. Ask about our integrated Records Management, Computer Aided Dispatch and Mobile solutions.

